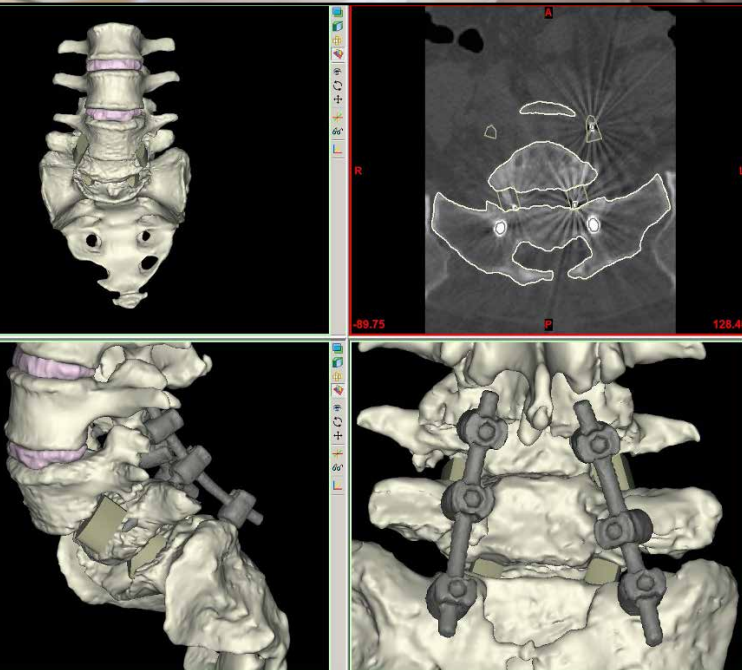


When to Order CT Scans

SimonMed offers state-of-the-art CT scans for patients who have suffered head or body trauma as a result of a motor vehicle accident.

CT is first line of imaging for the following traumatic conditions:

- Rib or sternal fractures (can also assess for pneumothorax and mediastinal bleeding).
- Spinal or extremity hardware assessment: traumatic hardware loosening or fracture cannot be detected on MRI.
- Pars defects, superior to MRI although may not show acute edema as seen on MRI.
- Spine fractures, superior in characterization of these as compared to MRI.
- Trouble shooting following MRI, significant marrow edema may be nonspecific on MRI and if symptoms persist or radiologist recommends, CT can confirm fractures. Occasionally CT can confirm spinal disc or ligament calcifications.
- Extremity trauma where x-ray is negative, CT can further evaluate.
- Intracranial bleeding. CT is a quick and cheaper option to exclude this.
- Patients with suspected abdominal injuries (CT with contrast).
- Patients with non-MRI compatible metal implants.
- CT offers 3D reconstructions for attorneys and law firms.



Slice thickness matters!

SimonMed offers state-of-the-art thin section CT scans at almost every location nationwide.



SPIN

SimonMed Personal Injury Now

SimonMed.com